

Deep Learning Model for Detection of Retinal Vessels from Digital Fundus Images- A Survey

Md Mohaimenul Islam^{1,2}, Tahmina Nasrin Poly^{1,2}, Suleman Atique⁴, Yu-Chuan (Jack) Li^{1,2,3} and Hsuan Chia Yang^{1,2*}

¹Graduate Institute of Biomedical Informatics, College of Medical Science and Technology, Taipei Medical University, Taipei, Taiwan

²International Center for Health Information Technology (ICHIT), Taipei Medical University, Taipei, Taiwan

³Department of Dermatology, Wan Fang Hospital, Taipei, Taiwan

⁴Department of Health Informatics, College of Public Health and Health Informatics, University of Hail, Saudi Arabia

***Corresponding Author:** Hsuan Chia Yang, Graduate Institute of Biomedical Informatics, College of Medical Science and Technology, Taipei Medical University, Taipei, Taiwan.

Received: October 24, 2019; **Published:** January 17, 2020

Abstract

Computer-aided detection (CAD) system is a realistic option for physicians to screen fundus images. Automated segmentation of retinal vessel is in fundus important step to identify the retinal disease region. However, identification of the retinal disease region accurately is still challenging due to the varied distribution of blood vessel on noisy and low contrast fundus images. Healthcare system has been changing significantly with the emergence of machine learning (ML), deep learning (DL) and artificial intelligence (AI) in recent year. Retinal vessel detection is one such area of application of deep learning, for improving the accuracy of detection and segmentation and the quality of patient care. Recently, the convolutional neural networks (CNN) have been applied to the detection of the retinal vessel from fundus images and have demonstrated promising results. The range of accuracy of the CNN model was 0.91 - 0.95 and the area under the receiver operating curve was 0.09 - 0.98. Therefore, CNN may play a crucial role in determining the therapeutic methods and detecting the retinal vessel accurately in an individual manner. In this survey, we described the use of CNN in fundus imaging, especially focused on CNN technique, clinical application for retinal vessel detection and future prospective.

Keywords: Computer-Aided Detection; Retinal Vessels; Convolutional Neural Network; Image Detection

Introduction

Recently, deep learning algorithms have been extensively used in almost every area in healthcare because of their successful outcomes in image recognition, natural language processing, speech recognition, bioinformatics, computer vision, cancer, diabetic retinopathy [1,2]. The identification of interaction between drugs, development of new drug molecule, diagnosis of cancer and other diseases, automated treatment and dose recommendation is a very complicated process, but deep learning algorithms have created new hope that they could aid in helping physicians make the right considerations in diagnosis and treatment by providing as an immense of scientific knowledge [3,4]. It is also contributing to biomedicine including computational drug discovery. By using the tremendous deluge of healthcare data, deep learning algorithms are actually helping physician to make real-time clinical decision making for their patients.

Retinal vessel detection is an appropriate application for precision medicine and artificial intelligence techniques because of monitoring retinal vessel in fundus images may assist physicians to correctly diagnosis and treatment of ophthalmologic diseases [5]. As manual detection of the retinal vessel is challenging and time-consuming; therefore, there is an unmet and urgent need to develop an automatic

detection of retinal vessel for cost-effective screening and treatment. The use of the CNN algorithms in the retinal vessel detection has generated much interest over the few years. This review aims to evaluate the effectiveness of the CNN model for detection of retinal vessels.

Deep learning

Originally developed as mathematical theories of the information-processing activity of biological nerve cells, the structural elements used to describe an ANN are conceptually analogous to those used in prediction model/recommendation model, despite it belonging to a class of statistical procedures [6]. The basic element of the model is given below.

Perceptron

It is a simple algorithm that takes an input vector x of m values (x_1, x_2, \dots, x_n) which is often recognized as input features or simply features. It then multiplies them by some factors called "weight", represented by w_1, w_2, \dots, w_n , gives an outputs either 1 (yes) or 0 (no).

Mathematically expression of this function is given below:

$$f(x) = \begin{cases} 1 & wx + b > 0 \\ 0 & \text{otherwise} \end{cases}$$

Here, w is a vector of weights, wx is the dot product of $\sum_{j=1}^m w_j x_j$, and b is a bias. A weight is a connection between neuron that carries a value. However, the higher the value, the larger the weight is. However, $wx+b$ always defines a boundary hyperplane that changes position according to the values assigned to w and b . If x lies above the straight line, then the answer is positive, otherwise it is negative. Moreover,

$$f(x) = \begin{cases} 1 & \text{if } w_1x_1 + w_2x_2 + \dots + w_ix_i + w_nx_n > b \\ 0 & \text{otherwise} \end{cases}$$

The perceptron often takes some linear combination of input values or features compare it to a threshold value b and return 1 if the threshold exceeded and zero if not.

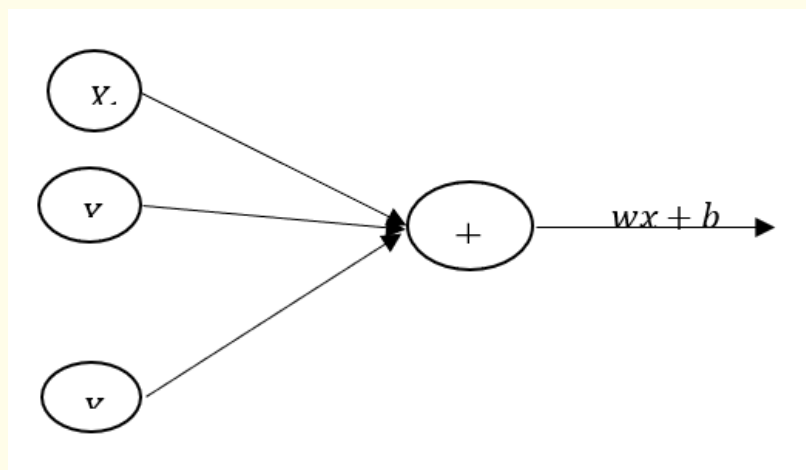


Figure 1: Perceptron.

Multilayer perceptron (MLP)

An MLP (or Artificial Neural Network) is a deep, artificial neural network takes more than one perceptron. An MLP with three-layers, first layer consider as a input layer, and last consider as a output layer and middle layer consider as a hidden layer. Input layer receive input value such as x_1, x_2, \dots, x_n and take the output (y_n) from the output layer. However, number of hidden layer can be added according to need. An example of an MLP is given below.

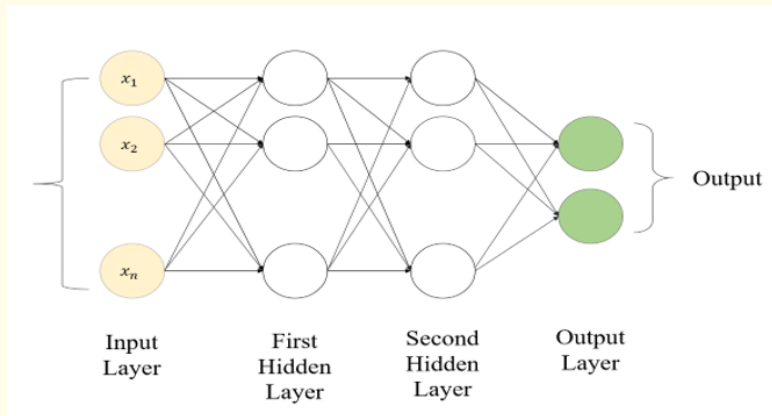


Figure 2: Basic structure of ANN model.

It always applies to supervised learning problems in which a set of input and output variables are trained and learn the pattern between those in- and outputs. However, training process involves with adjusting the input parameters or the weights and biases. Because, all the edge weights are randomly assigned initially. The adjustment process need to be repeated until the output error is below or equal to a predetermined threshold. It is, however, important to minimize the errors during the training process. To minimize the errors during the training process, backpropagation is used to adjust those weight and biases to make less errors. The error can be measured in a variety of ways such as root mean squared error (RMSE), mean bias error (MBE).

In the classification outcome, activation function like softmax function is used in the output layer to make sure that the outputs are probabilities and they take value up to 1. An arbitrary real-value score is always taken by the Softmax activation function and it then convert it to a vector values between zero and one. It is like:

$$P(A) + P(B) = 1$$

Activation function

Activation function is an integral part of neural network that is often known non-linearity, describe the input and output relations in a non-linear way. However, non-linearity element allows for higher flexibility and make a complex function during the whole model learning process. It helps to speed up the whole learning process. Several activation functions such as sigmoid, tanh, ReLU are commonly use in practice.

Above activation function σ with the (x_1, x_2, \dots, x_n) input variables (w_1, w_2, \dots, w_n) weight vector, b bias, and Σ summation is given in the following diagram.

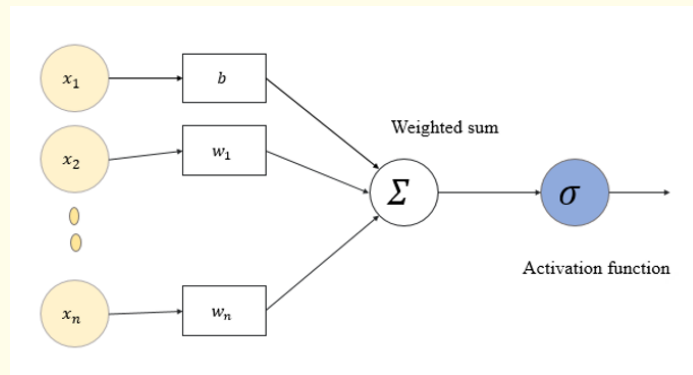


Figure 3: Basic structure of activation function.

Sigmoid function

It takes a real-value input and convert it to range between 0 and 1. The sigmoid function is defined as follows:

$$\sigma(x) = \frac{1}{1 + e^{-x}}$$

Here it is clear that it will convert output between 0 and 1 when the input varies in $(-\infty, \infty)$. A neuron can use the sigmoid for computing the nonlinear function $\sigma(y = wx + b)$. If $y = wx + b$ is very large and positive, then $e^y \rightarrow 0$, so $\sigma(y) \rightarrow 1$, while $y = wx + b$ is very large and negative $e^y \rightarrow \infty$, so $\sigma(y) \rightarrow 0$.

Tanh: It takes a real-value input and convert it to the range of -1 and 1. The tanh function is defined as follows:

$$\tanh(x) = 2\sigma(2x) - 1$$

ReLU: It is called Rectified Linear Unit and takes a real input variable and thresholds it at zero (replace native values with zero). The ReLU function is defined as below:

$$f(x) = \max(0, x)$$

Loss function

It represents how well specific algorithm model works. Loss function would be large if prediction results are far from actual results. Optimizer function is used to reduce the error in prediction. However, loss functions can be classified into two major categories such as regression losses and classification losses. It can be mathematically expressed by:

$$\sigma(w, b) = \frac{1}{m} \sum_{i=1}^m L(\hat{y}^{(i)}, y^{(i)})$$

$$L(\hat{y}, y) = -(y \log \hat{y} + (1 - y) \log(1 - \hat{y}))$$

Optimization algorithms

It is generally use to minimize errors, make slightly better and faster results by updating the input parameters such as weight and bias values. Gradient Descent is most widely used optimization algorithms that help to tell us whether the function is decreasing and increasing at a particular point. The following figure represents how cost function $C(w)$ is one single variable w .

The cost function C is the initial value and desired point is minimum C_{min} . However, the starting weight is w_0 and each step represents by r and the gradient is the direction of maximum increase. The direction of the value can be expressed mathematically to the partial derivative of $\frac{\partial C}{\partial w}$ evaluate a point w , reach at step r . However, the opposite direction can be expressed by $-\frac{\partial C}{\partial w}(w_r)$. Most commonly used optimizer are Momentum, Adagrad, AdaDelta, Adam.

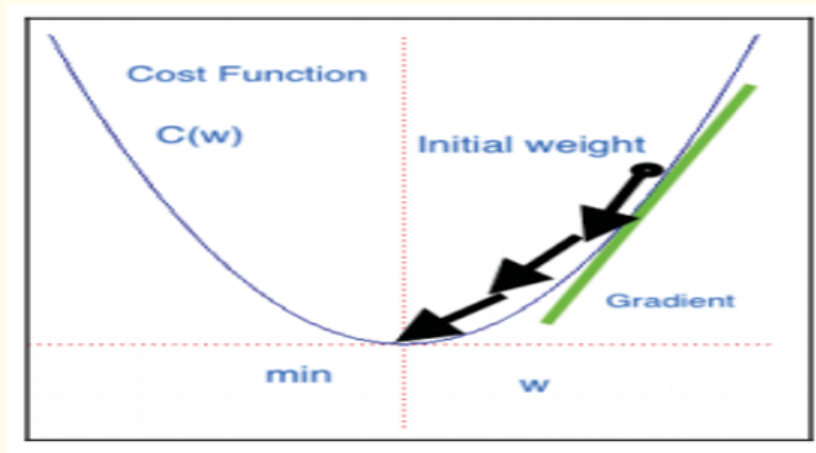


Figure 4: Gradient descent.

Convolutional neural network

The convolutional neural networks (CNNs) learn to perform their tasks through repetition and self-correction. A CNN algorithm consists of three layers such as convolutional layer, pooling layer and fully connected layer.

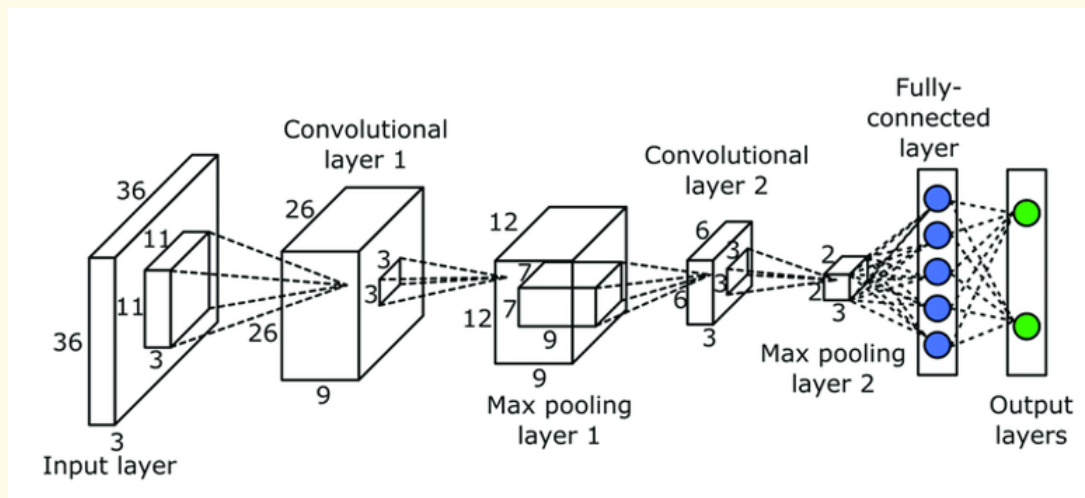


Figure 5: Architecture of CNN.

Convolutional layer

It is the main building block of the CNN. It carries the main portion of the network’s computational load. A convolutional layer consist of many kernels that consider as a set of learnable parameters. However, it is spatially smaller than an image but is more in-dept. Neuron in the first convolutional layer are not always linked to each pixel in the input image but only to pixels in their receptive fields. However, each neuron in the second convolutional layer usually connect only the neuron located within a small rectangle in the first layer. In this process the network concentrate on low-level features in the first hidden layer, afterwards assemble all into higher-level features in the next hidden layer and so forth so on. The is the most common hierarchical structure that’s why CNNs perform well for image recognition. The formula is given below:

$$h_{i,j} = \sum_{k=1}^m \sum_{l=1}^m w_k l x_{i+k-1,j+l-1}$$

Here, m= kernel width and height, h = convolutional output, x = input and w = convolutional kernel.

Pooling layer

A pooling layer typically works on every input channel independently, so the output depth is the same as the input depth. It replaces the output of the network at certain locations by deriving a summary statistics of the nearby outputs. Pooling layer helps in reducing the spatial size of the representation that usually help to reduce the computation load and the memory usage. A pooling neuron has no weights; is aggregate the inputs using an aggregation function like the max and mean. In mathematically,

$$h_{i,j} = \max\{X_{i+k-1,j+l-1} \forall 1 \leq k \leq m \text{ and } 1 \leq l \leq m\}$$

Fully connected layers

It usually combine features learnt by different convolutional kernel. Figure 6 shows how it works for detection of retinal vessels.

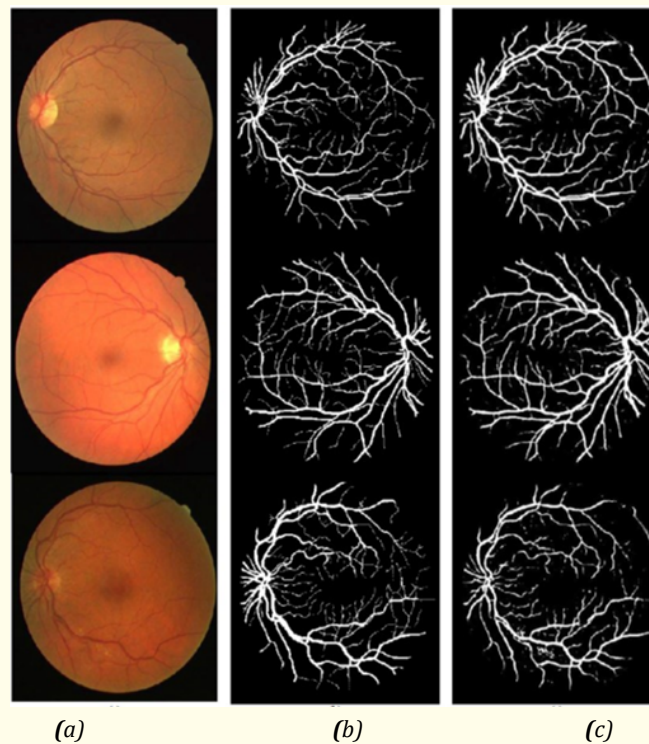


Figure 6: Detection of retinal vessel using CNN a) Original images b) corresponding ground truth and c) detection results.

Clinical applications

The convolutional neural network could remarkably change the way of retinal disease diagnosis and management in the near future. Automated diagnosis of retinal vessel might be popular in an era where physicians, patients, healthcare policy makers would want to get cost-effective and efficient care. Deep learning based automated detection of retinal vessel would screen patients without requiring any experts to interpret retinal images. Therefore, this could be used by any kinds of physicians who are not normally ophthalmologists. The convolutional neural network algorithms have been applied to detect retinal vessel. Included studies used the DRIVE, STARE, and CHASE DB1 dataset to develop and evaluate their performance. Studies were published between 2015 and 2018. The range of accuracy was 0.91 to 0.95 and the range of area under receiver operating curve was 0.95 to 0.98. Table 1 shows the performance of CNN model for retinal vessel detection.

Author	Year	Model	Dataset	SN/SP	Accuracy	AUROC
Guo [7]	2018	MDCNN	DRIVE	0.98/0.70	0.96	0.97
			STARE	0.98/0.56	0.95	0.95
Oliveira [8]	2018	CNN	DRIVE	0.80/0.98	0.95	0.98
			STARE	0.83/0.98	0.96	0.99
			CHASE DB1	0.77/0.98	0.96	0.98
Dasgupta [9]	2017	CNN	DRIVE	-	0.95	0.97
Şengür [10]	2017	CNN	DRIVE	-	0.91	0.96
Li [11]	2016	CNN	DRIVE	0.7/0.98	0.95	0.97
			STARE	0.77/0.98	0.96	0.98
			CHASE DB1	0.75/0.97	0.95	0.97
Maji [5]	2016	CNN	DRIVE	-	0.94	-
Lahiri [12]	2016	CNN	DRIVE	-	0.95	0.95
Liskowski [13]	2016	CNN	DRIVE	0.75/0.98	0.95	0.97
			STARE	0.81/0.98	0.96	0.98
Fu [14]	2016	CNN	DRIVE	0.72/-	0.94	-
			STARE	0.71/-	0.95	-
Fu [15]	2016	CNN+ CRF layer	DRIVE	0.76/-	0.95	-
			STARE	0.74/-	0.95	-
			CHASE DB1	0.71/-	0.94	-
Melinscak [16]	2015	CNN	DRIVE	0.72/0.97	0.94	0.97

Table 1: The performance of CNN model of detection retinal vessel.

Retinal vessel detection from different database

Three types of datasets were used in the included studies. Figure 7 evaluates the retinal vessel images detection images.

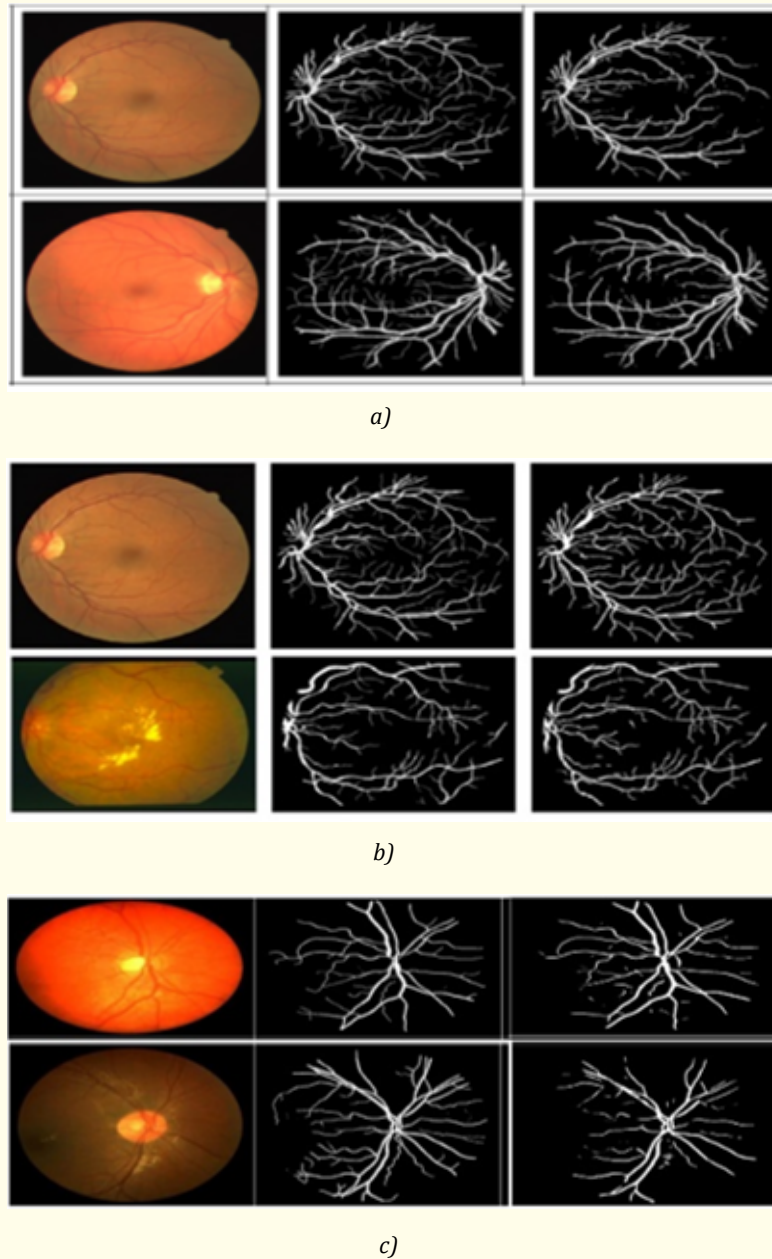


Figure 7: Visualization of the retinal vessel detection results from a) DRIVE dataset b) STARE dataset c) CHASE_DB1 dataset for original, corresponding and detection images.

Conclusion

Although, the convolutional neural network algorithms are in their initial stages for detection of retinal vessel detection, but they have been shown some enthusiastic findings. The future role of CNN algorithms in the detection of the retinal vessel may be promising for its high accuracy and robustness. Automated detection of retinal vessel would help physicians or medical staff who are not very expert

in retinal vessel detection imaging. It will contribute to making correct diagnosis and treatment faster and earlier. Integration of deep learning algorithms in real-world clinical setting would expectedly change traditional clinical practice for screening retinal images. With the increased prevalence of the retinal disease patients, deep learning based automated screening tools could ease the pressure on the healthcare system, particularly in under developing countries with large number of patients with eye diseases to be screen for eye disease with limited resources. Automated detection of retinal vessel may make the whole screening process more efficient, cost-effective and most importantly accessible to all.

Author's Contribution

Yu-Chuan (Jack) Li and Hsuan Chia Yang both authors have contributed equally.

Bibliography

1. Jiang Z., *et al.* "Retinal blood vessel segmentation using fully convolutional network with transfer learning". *Computerized Medical Imaging and Graphics* 68 (2018): 1-15.
2. Hinton G., *et al.* "Deep neural networks for acoustic modeling in speech recognition". *IEEE Signal Processing Magazine* 29 (2012).
3. Kalinin AA., *et al.* "Deep learning in pharmacogenomics: from gene regulation to patient stratification". *Pharmacogenomics* 19 (2018): 629-650.
4. Nemati S., *et al.* "Optimal medication dosing from suboptimal clinical examples: A deep reinforcement learning approach: 2016". 38th Annual International Conference of the IEEE Engineering in Medicine and Biology Society (EMBC), IEEE (2016): 2978-2981.
5. Maji D., *et al.* "Ensemble of deep convolutional neural networks for learning to detect retinal vessels in fundus images". *arXiv* (2016): 160304833.
6. Walczak S. "Neural networks in organizational research: Applying pattern recognition to the analysis of organizational behavior". *Organizational Research Methods* 10 (2007): 710.
7. Guo Y., *et al.* "A novel retinal vessel detection approach based on multiple deep convolution neural networks". *Computer Methods and Programs in Biomedicine* 167 (2018): 43-48.
8. Oliveira A., *et al.* "Retinal vessel segmentation based on fully convolutional neural networks". *Expert Systems with Applications* 112 (2018): 229-242.
9. Dasgupta A and Singh S. "A fully convolutional neural network based structured prediction approach towards the retinal vessel segmentation: 2017". IEEE 14th International Symposium on Biomedical Imaging (ISBI 2017), IEEE (2017): 248-251.
10. Şengür A., *et al.* "A retinal vessel detection approach using convolution neural network: 2017". International Artificial Intelligence and Data Processing Symposium (IDAP), IEEE (2017): 1-4.
11. Li Q., *et al.* "A cross-modality learning approach for vessel segmentation in retinal images". *IEEE Transactions on Medical Imaging* 35 (2015): 109-118.
12. Lahiri A., *et al.* "Deep neural ensemble for retinal vessel segmentation in fundus images towards achieving label-free angiography: 2016". 38th Annual International Conference of the IEEE Engineering in Medicine and Biology Society (EMBC), IEEE (2016): 1340-1343.

13. Liskowski P and Krawiec K. "Segmenting retinal blood vessels with deep neural networks". *IEEE Transactions on Medical Imaging* 35 (2016): 2369-2380.
14. Fu H., *et al.* "Retinal vessel segmentation via deep learning network and fully-connected conditional random fields: 2016". IEEE 13th international symposium on biomedical imaging (ISBI), IEEE (2016): 698-701.
15. Fu H., *et al.* "Deepvessel: Retinal vessel segmentation via deep learning and conditional random field". International conference on medical image computing and computer-assisted intervention, Springer (2016): 132-139.
16. Melinščak M., *et al.* "Retinal vessel segmentation using deep neural networks". 10th International Conference on Computer Vision Theory and Applications (VISAPP 2015) (2015).

Volume 11 Issue 2 February 2020

©All rights reserved by Hsuan Chia Yang., *et al.*