

Shrinkage of Dental Composite Resin: Contemporary Understanding its Enigmas and How to Solve? A Review

Nagy Abdulsamee^{1*}, Ahmed Elkhadem² and Passant Nagi³

¹Consultant Prosthodontics and Head of Dental Biomaterials, Modern University for Technology and Information, Egypt

²Assistant Professor of Pediatric Dentistry, Faculty of Oral and Dental Medicine and Surgery, Cairo University, Egypt

³Lecturer of Pediatric Dentistry, Faculty of Oral and Dental Medicine and Surgery, Cairo University, Egypt

***Corresponding Author:** Nagy Abdulsamee, Consultant Prosthodontics and Head of Dental Biomaterials, Modern University for Technology and Information, Egypt.

Received: March 14, 2020; **Published:** April 06, 2020

Abstract

Nowadays dental patients are seeking a restorative material to their teeth that fulfilled most of the ideal requirements for such use especially aesthetic and functional performance needs. Traditionally composite resin can fulfill these requirements but with the major drawback of shrinkage during polymerization. The shrinkage will be manifested as marginal leakage, cuspal deflection, tooth or restoration fracture, postoperative sensitivity that ends ultimately by failed restoration. The aim of the current work was to pay attention of dental workers to the origin of polymerization shrinkage, its consequences, factors affecting, methods used to measure it, and how can they minimize it for promoting longevity of the restoration.

Keywords: Dental Composite Resin; Polymerization Shrinkage; Shrinkage Stresses; C-Factor; Low Shrinkage Polymer; Bulk Fill; Spherical Glass Mega Fillers

Introduction

Over the past 50 years, changes have occurred in the development of aesthetic restorative materials. One of these materials is the resin composite but its greatest drawback in this regard seems to be polymerization shrinkage (PS). Resin composites undergo hardening through free radical addition polymerization which inherently is accompanied by shrinkage [1]. This PS results in the development of internal contraction stress which can damage the marginal seal of the bonded restorations, interfacial gap formation, postoperative sensitivity, marginal staining, or recurrent caries, and fracture and crack formation at surrounding walls if cusps are displaced [2].

Factors affecting the stress formation are volumetric polymerization shrinkage, elastic modulus and adherence of the resin composite to the cavity walls. During polymerization the restorative resin shrinks and pulls the opposing walls and floor of the cavity closer together and the magnitude of this pulls depends upon the configuration factor of this cavity [3]. Recently one author attempts to add a new terminology by giving the term "Positive polymerization shrinkage can be defined as the shrinkage that takes place in such a way that the restoration material is being pulled towards the cavity wall, resulting in no gap formation or stress generation between the restoration and the cavity wall during the polymerization sequence. Negative polymerization shrinkage can be defined as the shrinkage that takes place in such a way that the restoration material is being pulled away from the cavity wall, resulting in gap formation or stress generation between the restoration and the cavity wall during the polymerization sequence (Figure 1) [4].

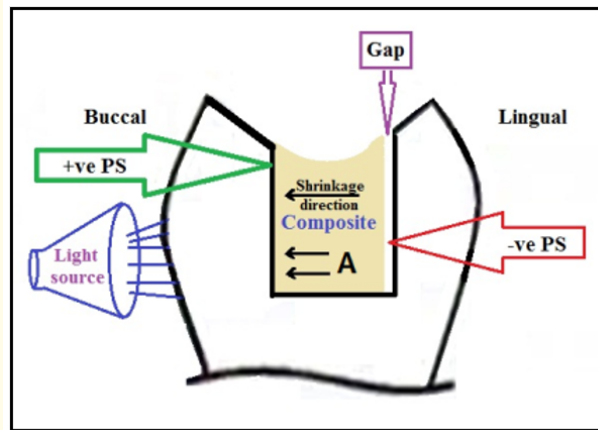


Figure 1: Positive PS on the buccal wall of the cavity and negative PS on the lingual wall with gap formation (A is the shrinkage towards the light source).

Origin of polymerization shrinkage

Blue light activates Camphorquinone photoinitiator (CQ) and transforms it chemically into an excited triplet state which reacts with the amine to produce free radicals [5]. This reaction also stimulates the accelerators to produce larger amounts of free radicals which begin the polymerization process. The generated free radicals react with the monomer molecules in the resin [6], forming active centers for polymerization. Following this, propagation of the polymerization process continues by sequential addition of the monomers to the active centers to produce long cross-linking polymer chains. This reaction brings the individual monomer molecules closer together to form covalent bonds. Monomer molecules are held together by van der Waals forces where the intermolecular distance is 0.3 nm - 0.4 nm. After their polymerization, these molecules are held by covalent bond where the intermolecular distance is reduced to 0.15 nm. This reduction in the intermolecular distance produces volumetric polymerization shrinkage [7].

Polymerization shrinkage of composite resins passes through two phases (Figure 2), the first one the composite resin is transformed from the viscous state to the gel state (pre-gel phase) and the second is the post-gel phase (hard phase), where the gel form is hardened [8]. During the initial stages of the polymerization process, the composite mass is able to undergo plastic deformation. In other words, there is some amount of flow exhibited by the composite which can compensate for the some of the shrinkage. It is believed that in this early plastic stage, only chain formation occurs and cross-linking is not complete, which may allow the molecules to move into new positions and flow (pre-gelation phase). The resin matrix changes from a pre-gel or viscous-plastic paste into a rigid-elastic material as the gel-point (or a range of gelation) is reached. The gel point is defined as the moment at which the material can no longer provide viscous flow to keep up with the curing contraction [9]. During composite resin transformation from the viscous state to the gel state, the volumetric change in the shrinkage is higher than the change that occurs in the second phase. During the first phase of resin polymerization shrinkage is compensated due to resin flowable nature but this is not the case during the second phase because the movement is halted and the stress could not be met [10,11].

Within a filled cavity, the gel-point is a point at which the polymer chains stretch from one side of the cavity preparation to the other. Solidification or post-gel contraction follows, during which the material becomes increasingly stiffer as it loses its potential for plastic deformation. During post-gelation, the elastic modulus or Young's modulus of the material increases dynamically [11].

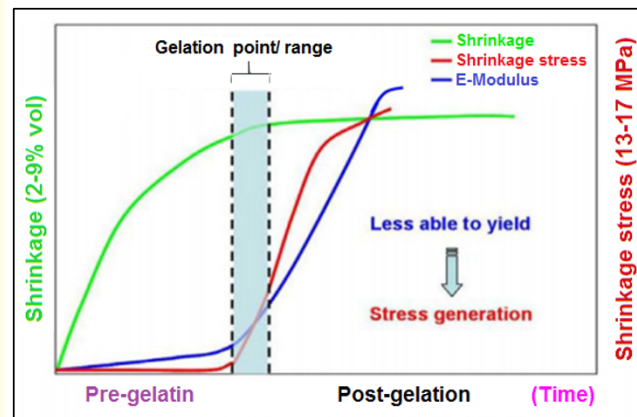


Figure 2: Relationship between volumetric shrinkage, elastic modulus and shrinkage stress.

In a clinical situation where there is an intermediate adhesive/bonding agent layer between the tooth and the composite resin, the ability for plastic deformation of the composite is hindered at the interface. When composite is placed and polymerized in a constrained cavity [12] internal tensile stresses (polymerization shrinkage stress) develop within the composite.

Prior to reaching the gel point, a part of the developing stresses are compensated by flow of the composite from the free or the unbonded surface [11]. This mode of compensation is not possible after gelation and, subsequently, large stresses are created in the composite which produces strain the tooth-composite interface [13]. The amount of shrinkage stress development is dependent on the rate of modulus development, ability of the material to flow and the extent of the polymerization reaction (Figure 2) [11].

Another explanation to the cause of polymerization stresses is that the exothermic reaction created when the monomer converts to the polymer produces a volume reduction in the polymer with a resulting decrease in molecular vibration and intermolecular distances [14]. As the polymer is formed, the resin matrix changes from a paste or pregel state to a viscous solid [15] and the composite resin contracts by about 1.5% to 5%. When composite resin is a paste, or pregel state, no stress is conducted to surrounding tooth structure, but as the gel point is reached stress appear and as curing begins, the material flows from unbound surfaces to accommodate for shrinkage. Flow stops and the bonded composite resin transmits shrinkage stresses generated to the surrounding tooth. As the composite resin becomes more rigid because of the increasing modulus of the composite. The stress generated at this point (gel point) may exceed the adhesive bond or the cohesive strength of the tooth or the composite, producing a marginal defect [9]. Damage occurs within the composite if this stress is greater than the cohesive strength of the composite, [16]. Enamel fracture occurs if the stress exceeds the tensile strength of enamel [17]. If the cavity walls are primarily enamel, which is brittle and too thin to withstand the forces generated by polymerization shrinkage, cracks or fractures are seen in teeth with wide restorations bucco-lingually [18].

Factors affecting PS are:

1. **Composition of resin matrix:** In case of methacrylate monomers, it is impossible to avoid shrinkage, which ranges up to 10% - 16% by volume [19]. The main part of organic matrix in composite is the high viscosity methacrylate monomer BIS-GMA. It has lower polymerization shrinkage than other monomers because its high viscosity results in less degree of freedom, which in turn, results in kinetically low degree of conversion [20]. Composite resins with silorane monomer have lower polymerization shrinkage than methacrylate-based composites [21].

2. **Degree of conversion of resin matrix:** The number of C=C double bonds converted to C-C single bonds indicates the degree of conversion of composite. There is directly proportional of volumetric shrinkage and the degree of conversion [22]. Viscoelastic behavior of the composite resin determines its polymerization shrinkage is described by its flow and modulus of elasticity (Figure 3) [23]. Different monomers possess different degrees of conversion depend ending on their molecular weighs and initial concentration of c=c double bonds. TEGDMA, which is used as diluent, has high degree of conversion than BIS-GMA [24].

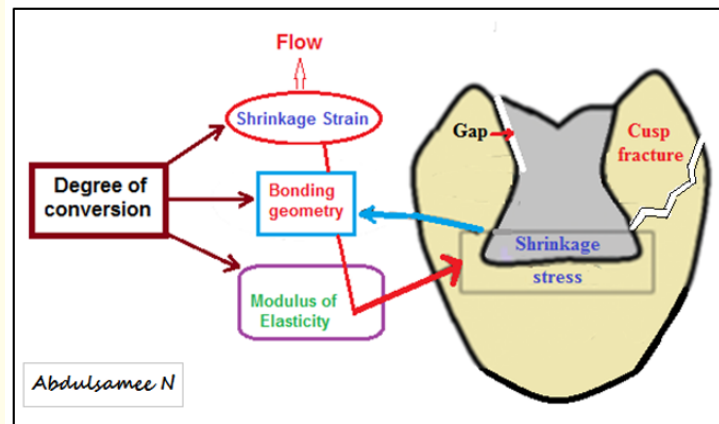


Figure 3: Relationship between degree of conversion and shrinkage stress.

The final degree of conversion ranges between 55% and 75% in commercial composites [24]. The modulus of elasticity of resin increases, as the degree of conversion increases which ultimately increases the shrinkage stress. In some situations, the reduction of contraction stress may be attributed to partial polymerization of the composite resin [25]. The degree of conversion is the major parameter, which influences polymerization shrinkage and stress development [12].

3. Filler volume fraction

Filler volume fraction has an inverse relation to volumetric shrinkage [26]. As the volume of filler content increases, the volume of resin matrix decreases and hence volumetric shrinkage reduces proportionately. The shrinkage values for BIS-GMA and TEGDMA (triethylene glycol dimethacrylate) are 5.2% and 12.5%, respectively [27] but the shrinkage value for composites is only 2% - 3% because of the filler content.

4. Configuration factor (C-Factor)

When a resin composite cures while bonded to the walls of a tooth cavity, stresses develop in the material, at the tooth-restoration interface and in the enamel and dentin of the tooth. The stresses result from volumetric shrinkage of the composite and their developing stiffness (elastic modulus). Constraint from the cavity walls at the bonded interface creates these stress conditions. Without the constraint, fewer stresses occur. These stresses are of clinical relevance because they may create interfacial gaps or, if the bond is sufficiently strong, cause deformation of the tooth. The stresses depend on the anatomy of the tooth and the geometry of the cavity preparation, the quality of the bonded interface [28].

The term "C factor" or "Configuration factor," is defined as the ratio of bonded to unbonded surfaces of the composite restorations (Figure 4) [29]. Shrinkage of the composite resin was determined by the bonding of the composite resin to the tooth structure and by the free

surfaces rather than by the orientation of direction of the curing light as believed earlier (Figure 5) [30]. If the C-factor is high as the case with class I cavities, the shrinkage stress is high. As the number of unbonded surface increases, there will be lesser stress generation. This is due to the fact that the increased surface area will help to relieve the generated stresses. Cavities with C factor less than one generate least stress and it increases as the C factor increases (Figure 4) [31].

Bound surfaces	5	4	3	2	1
Unbound surfaces	1	2	3	4	5
	Class I	Class II	Class III	Class IV	Class V
C-factor	$5/1 = 5$	$4/2 = 2$	$3/3 = 1$	$2/4 = 0.5$	$1/5 = 0.2$

Figure 4: The C-Factor in different class restorations.

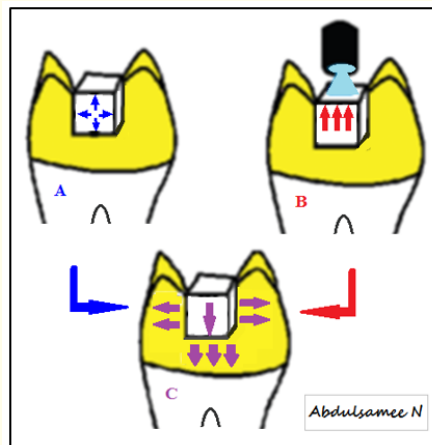


Figure 5: Direction of composite resin shrinkage vector when A) Chemically cured B) Light activated and C) Dual cured.

5. Intensity of curing light

There is direct proportionality between polymerization shrinkage and light intensity, i.e. higher light intensity produced greater polymerization shrinkage [26]. The reason for higher shrinkage with higher intensity is due to greater degree of conversion. The slower polymerization delays the gel point, which provides for stress relaxation in the resin and the interface [32]. Polymerization shrinkage is highest with ramp curing modes and high intensity modes, whereas it is lesser with step-curing and low intensity modes [33].

6. Thickness of composite resin, shade and opacity of composite

It has been proved that incremental curing induces lesser polymerization shrinkage stress than bulk curing [34].

Consequences of shrinkage

Polymerization shrinkage causes detachment of the enamel margins and/or can form gaps that result in marginal microleakage that allows the passage of bacteria, fluids, molecules, or ions between the cavity surface and composite resin [35]. Microleakage of posterior composite especially at the gingival margins of the proximal box of class II cavities may leads to staining at the margins of restorations, recurrent caries, hypersensitivity and pulp pathology [36].

The volumetric shrinkage during polymerization, inevitably generates stress, if the composite is tenaciously adherent to the walls of a tooth cavity can result in deformation of the cavity walls if the adhesion force is strong enough. This will cause cusps to deflect inward and pressure is transferred to dentinal tubules and pain is elicited. The mechanism of eliciting pain in this case is due to fluid flow through the dentinal tubules "hydrodynamic hypothesis.;" this disturbance results in the activation of nociceptors in the inner dentin and peripheral pulp (Figure 6) [37]. If the thickness of the residual dental tissue is thin, it may also cause enamel fracture (Figure 7) when this latter is not sufficiently supported by the dentin [38]. This phenomenon, together with the flow that the composite undergoes, during the setting reaction, at the level of the free surface of the restoration, which is not subject to adhesion, limits the negative effects of stress but does not cancel them completely [39,40]. The ability of the composite to develop stress during its polymerization does depend greatly on the extent of the free surface compared with the adherent one and it's therefore strictly dependent on the cavity configuration. The greater the extension of the adherent surface compared with the free one, the greater the stress that is generated during the composite polymerization [41].

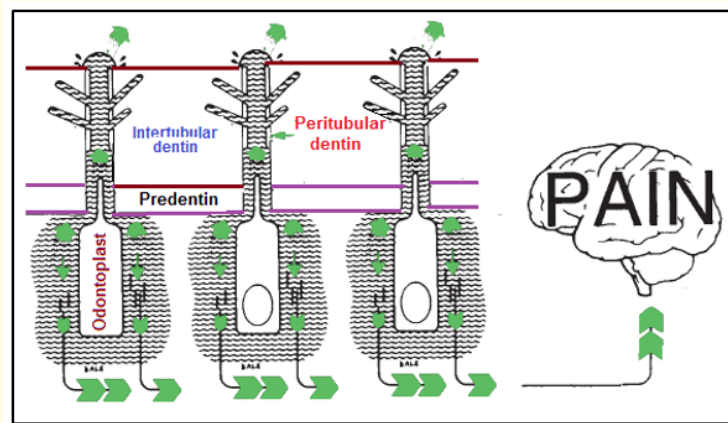


Figure 6: Schematic drawing of theoretic mechanism of dentin sensitivity. Fluid movement as proposed in hydrodynamic theory.

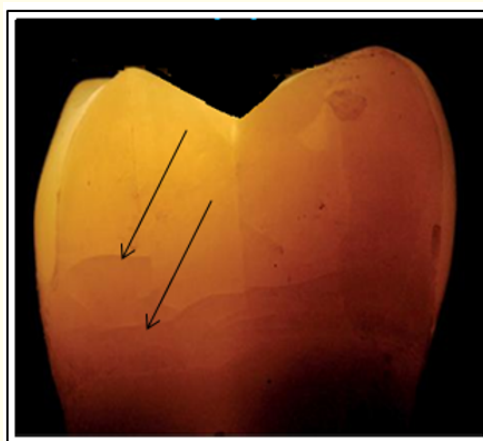


Figure 7: Enamel cracking.

Methods used to measure polymerization shrinkage and shrinkage stresses

Several methods are described in the literature for measuring the contraction that accompanies the cure of resin composite restorative materials. These methods include mercury dilatometer, bonded disk, acuvol, and managing accurate resin curing test. The *in vitro* polymerization stress test evaluates the stresses at the bonded interface due to resin composite polymerization. These method include tensiometer, tensometer and crack analysis [28].

Methods of minimizing polymerization shrinkage:

I. Use of stress absorbing liners

The application of flowable composite resin ensures a more intimate contact with the cavity's line angles and irregularities [42]. Flowable composite is a low-modulus composite that acts as an elastic buffer that compensates polymerization shrinkage stress by flow, eliminating mastication discomfort and theoretically eliminating cuspal deformation or gap formation and reducing microleakage [43]. When elastic modulus is low, the composite will stretch to accommodate the inherent modulus of the tooth. Therefore, the internal layer may absorb polymerization shrinkage stress of the resin composite by elastic elongation [44]. Flowable resin can be used as an intermediate stress absorbing layer as it has a lower elastic modulus as compared to composite resin, which reduces the stress at the tooth-restoration interface, ultimately reducing the cuspal deflection. This is called the "elastic wall concept" [45].

Resin-modified glass ionomer cements (RMGICs) might be a better material of choice for the liner because of their higher mechanical strength compared to the conventional material and their ability to set on command. They are also known to be less technique sensitive. Furthermore, RMGICs have been recommended as liners under resin composites to reduce the amount of polymerization shrinkage, potential microleakage and secondary caries [46]. In another research it was concluded that: 1) the use of RMGIC liner as the first gingival increment of class II restorations with both silorane- and methacrylate based composite resin restorations resulted in reduced microleakage, 2) the volumetric polymerization shrinkage was least with the silorane-based composite. However, further clinical research is needed to support these findings, as the volumetric polymerization shrinkage of the restorative material was evaluated without cavity factor and bonding influences [47].

II. Placement technique: It includes the following methods:

- A. The incremental technique:** This technique is based on polymerizing with resin-based composite layers less than 2-millimeters thick [48] and can help achieve good marginal quality, prevent distortion of the cavity wall (thus securing adhesion to dentin) and ensure complete polymerization of the resin-based composite. The various methods of placing composite related to the incremental technique are:
 - 1. Horizontal technique:** This technique is an occlusogingival layering generally used for small restorations; this technique increases the C-factor [48].
 - 2. Three-site technique:** This is a layering technique that is associated with the use of a clear matrix and reflective wedges. It attempts to guide the polymerization vectors toward the gingival margin thus preventing any gap formation [49].
 - 3. Oblique technique:** In this technique, wedge shaped composite increments are placed to further prevent distortion of cavity walls and reduce the C-factor. This technique may be associated with polymerization first through the cavity walls and then from the occlusal surface to direct vectors of polymerization toward the adhesive surface (indirect polymerization technique) [50].

4. **Successive cusp buildup technique:** In this technique, the first composite increment is applied to a single dentin surface without contacting the opposing cavity walls, and the restoration is built up by placing a series of wedge shaped composite increments (Figure 8) to minimize the C-factor in 3-D cavity preparations. Each cusp then is built up separately [51].

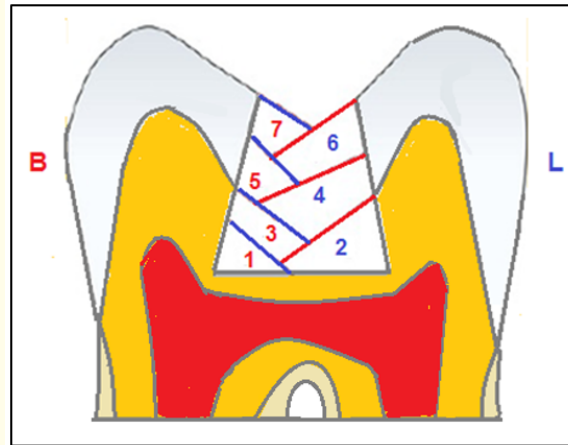


Figure 8: Successive cusp build up technique.

- B. Direct shrinkage:** A chemically cured resin based composite is used on the gingival floor in an attempt to direct the vectors of polymerization toward the warmer cavity walls. This will help to reduce the gap at the cervical margin [52].
- C. Bulk technique:** The bulk technique is recommended by some authors to reduce stress at the cavosurface margins [53]. Some manufacturers recommend using this technique with packable composites even though this is not supported by a recent study [54].

Researches have proved that bulk technique of composite placement results in more polymerization shrinkage than incremental layering technique. Incremental technique reduces the bonded/unbonded ratio, which results in less configuration factor, ultimately lesser shrinkage stress [55]. Horizontal layering technique increases the C-factor and hence the stress is greater. Buccolingual incremental technique induces least strain because cuspal tension is minimized in this technique as composite is applied to a single dentin surface without touching the opposing cavity wall. In centripetal buildup technique, as an initial vertical composite increment is placed in contact with the matrix band, class II cavities are converted to class I cavities [56].

III. Material aspect

A new monomer system named silorane was synthesized by reacting oxirane and siloxane molecules. The novel silorane-based resin is claimed to have the advantages of low polymerization shrinkage due to the ring-opening oxirane monomer which resulted in low shrinkage composite resins [56]. These monomers produce local volumetric expansion because of the opening of ring structure (Figure 9), which compensate for the volumetric shrinkage from C=C polymerization [57].

Modification of photoinitiator and inhibitor system can affect the polymerization reaction and shrinkage. Increasing the concentration of inhibitor reduced the rate of polymerization and shrinkage stress [22]. The rate of polymerization stress is reduced when camphorqui-

none content was substituted partly by phenylpropanedione [58], the addition of thiourethane oligomers has proven to reduce polymerization stress [59] and addition of up to 20% phene (new monomer) into BIS-GMA/TEGDMA [60]. The development of low shrinkage and bulk fill materials showed promising improvement in the reduction of polymerization shrinkage stress [61].

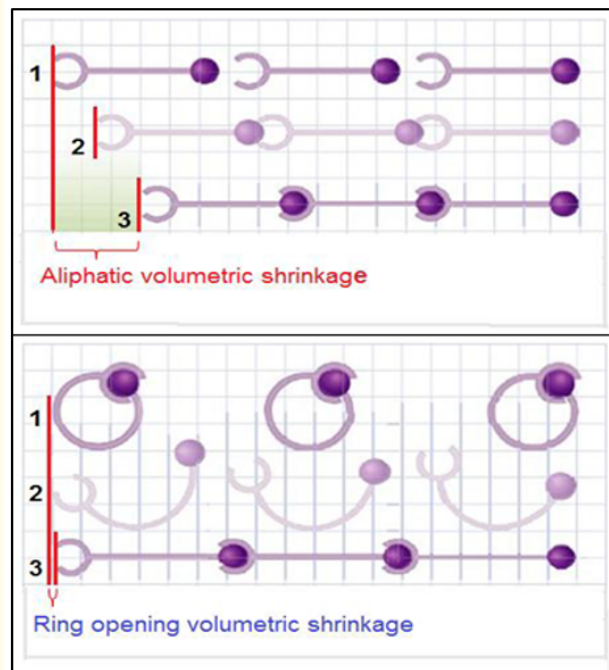


Figure 9: Volumetric polymerization shrinkage due to opening of ring structure (bottom) compared to aliphatic one (Top).

IV. Curing technique

Soft start polymerization that cured composite resin at a low intensity and with slow polymerization vs. higher intensity and faster polymerization resulted in improved marginal adaptation and physical properties [62]. Pulse delay technique curing with a delay of 3 - 5 minutes greatly reduced polymerization shrinkage than soft-start technique [63].

V. Preheating

Polymerization shrinkage is reduced if resin composites are preheated because the increased temperature reduces the viscosity of the material and increases radical mobility resulting in increased polymerization and higher degree of conversion. If shrinkage stress in composite resin is minimized, the success and survival rates of the restorations can be improved. So, a prudent practitioner should be aware of all the updates taking place in the field of composite resin to minimize shrinkage stress [64].

VI. Utilization of indirect composite resin restorations (Figure 10)



Figure 10: Composite inlay.

New-generation indirect resins, also known as ceromers (ceramic optimized polymers) maintain a higher density of inorganic ceramic microfillers compared to the earlier-generation direct and indirect systems. Some manufacturers have recommended ceromers to be used for inlays/onlays [65]. Ceromers have been noted for providing the advantages of composite resins and porcelain without being confined by their inherent limitations [66].

VII. The use of glass inserts (Figure 11)

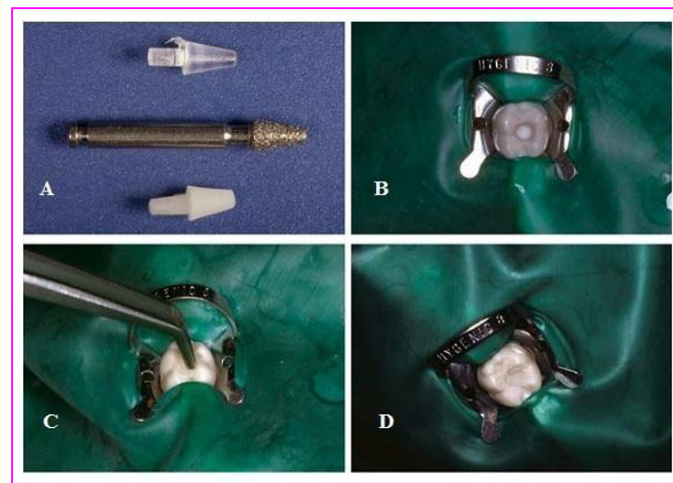


Figure 11: Glass inserts kit (A), inserted into composite filled tooth before its curing (B), kept in place during curing (C), and after curing and finishing (D).

Inserting spherical glass mega fillers (SGMF) into the composite restoration, prior to its polymerization, will decrease the amount of resin matrix used and consequently reducing restoration contraction during its polymerization. Previous works have demonstrated both *in vivo* and *in vitro* the effectiveness of this new restorative technique [67]. The spherical shape of SGMF does not affect the flow ability of the composite during the setting reaction, while minimizing the development of interfacial stress because of its sphere shape that possess the lowest lower surface/volume ration compared with other solid shapes. Another advantage of SGMF is its transparency allowing the diffusion of light through the mass of the composite with the maximum polymerization depth of the selected composite to carry out a bulk polymerization [68]. The effect of SGMF on reducing contraction stress in dental composite resins, was studied by means of a cavity model simulating the cuspal deflection which occurs on filled tooth cavity walls in clinical condition. The SGMFs are reliable in reducing contraction stress in dental composite resins [69].

Recent studies about polymerization shrinkage of composite resins and the resulting stresses

A study compared the microleakage among newer composite materials. ORMOCER - Admira, Tetric N-Ceram and Tetric Ceram concluded that 1) one of the primary variables that determine success in restorative dentistry is choosing the correct restorative material, 2) One of the factors which affects the performance of the material in the oral cavity is its microleakage and 3) ORMOCER - Admira performed better than the other two composite materials with the least microleakage [70].

Newer methods for evaluation of polymerization shrinkage (non-destructive methods) with micro-computed tomography (μ -CT) method. The study group included eight different flowable composites; Surefil SDR Flow (SDR), Charisma Flow (CHF), Clearfil Majesty

Flow (CMF), Vertise Flow (VF), Grandio Flow (GF), Filtek Supreme Ultimate Flow (3MEFU), Filtek Bulk Flow (3MBF), X-Tra Base Flow (XTB) and concluded that all tested materials were able to achieve acceptable shrinkage at 2 - 4 mm depth [71].

A meta-analysis demonstrated that marginal adaptation after 12 months showed statistically significant outcomes, where methacrylates-based composites presented significantly better results than resin composites containing modified monomers.

The good level of the scientific evidence as well as the overall low risk of bias of the included studies indicate that composites with silorane, ormocer or bulk-fill type modified monomers have a clinical performance similar to conventional resin composites [72].

Fiber Bragg grating (FBG) sensors used to compare the linear polymerization shrinkage of five resin-based composites (RBCs) Zirconfill® (ZFL); Aura Bulk-Fill (ABF); Tetric® N-Ceram Bulk-Fill (TBF); Filtek™ Bulk-Fill (FBF); and Admira Fusion-Ormocer® (ADF). The linear polymerization shrinkage of RBCs was evaluated in real time using optical fiber Bragg grating sensors embedded in the material evidencing good reliability. Within its limitations, this *in vitro* study showed that Admira Fusion, an Ormocer, presented the lowest linear shrinkage over all other RBCs, while restorative bulk-fill composites exhibited an intermediate behavior and Zirconfill showed the highest shrinkage values [73].

Conclusion

Polymerization shrinkage cannot be completely eliminated but there are numerous methods to reduce it, hence the clinician should implement any of these methods to improve the success rate and longevity of the composite resin restorations [74].

The current article discussed what clinicians and researchers need to know about polymerization shrinkage stress of resin-based materials. Shrinkage stress effects are reviewed and found that it depends upon many complex factors. The current review showed how much progress has been made in the collective development of research techniques to better understand, predict, and develop shrinkage stress mitigation options and strategies that will continue to benefit clinicians and their patients.

Disclosure Statement

The authors have no financial interest in the materials or devices reviewed and declare no conflict of interest.

Bibliography

1. Silika N., *et al.* "Light intensity effects on resin composite degree of conversion and shrinkage strain". *Dental Materials* 16.4 (2000): 292-296.
2. Meredith N and Setcheil DJ. "*In vitro* measurement of cuspal strain and displacement in composite restored teeth". *Journal of Dentistry* 25.2-4 (1997): 331-337.
3. Llie N., *et al.* "Low shrinkage composite for dental application". *Dental Materials* 26.2 (2007): 149-155.
4. Singh SV. "Polymerization Shrinkage a New Terminology". *Impression* 14.1 (2015): 849.
5. Stansbury JW. "Curing dental resins and composites by photopolymerization". *International Journal of Esthetic Dentistry* 12.6 (2000): 300-308.
6. Braem M., *et al.* "Mechanical properties and filler fraction of dental composites". *Dental Materials* 5 (1989): 346-349.
7. Peutzfeldt A. "Resin composites in dentistry: the monomer systems". *European Journal of Oral Sciences* 105.2 (1997): 97-116.

8. Dayangaç BÖG. "Kompozit rezinlerde polimerizasyon büzülmesi". *Ege Üniversitesi Dişhekimliği Fakültesi Dergisi* 13 (1992): 45-48.
9. Davidson CL and Feilzer AJ. "Polymerization shrinkage and polymerization shrinkage stress in polymer-based restoratives". *Journal of Dentistry* 25.6 (1997): 435-440.
10. Davidson CL., et al. "The competition between the composite-dentin bond strength and the polymerization contraction stress". *Journal of Dental Research* 63 (1984): 1396-1399.
11. Davidson CL and de Gee AJ. "Relaxation of polymerization contraction stresses by flow in dental composites". *Journal of Dental Research* 63 (1984): 146-148.
12. Braga RR., et al. "Factors involved in the development of polymerization shrinkage stress in resin-composites: a systematic review". *Dental Materials* 21.10 (2005): 962-970.
13. Bowen RL., et al. "Adhesive bonding of various materials to hard tooth tissues: forces developing in composite materials during hardening". *Journal of the American Dental Association* 106.4 (1983): 475-477.
14. Ferracane JL. "Developing a more complete understanding of stresses produced in dental composites during polymerization". *Dental Materials* 21.1 (2005): 36-42.
15. Charton C., et al. "Shrinkage stress in light-cured composite resins: influence of material and photoactivation mode". *Dental Materials* 23.8 (2007): 911-920.
16. Stansbury JW., et al. "Conversion-dependent shrinkage stress and strain in dental resins and composites". *Dental Materials* 21.1 (2005): 56-67.
17. Pensak T. "Clinical showcase". *Journal of the Canadian Dental Association* 70.2 (2004): 118-119.
18. Sarrett DC. "Clinical challenges and the relevance of materials testing for posterior composite restorations". *Dental Materials* 21.1 (2005): 9-20.
19. Jakubiak J and Linden LA. "Contraction in polymerization. Part 1. Fundamentals and measurements". *Polimery* 46 (2001): 7-8.
20. Kilambi H., et al. "Evaluation of highly reactive mono-methacrylates as reactive diluents for BISGMA-based dental composites". *Dental Materials* 25 (2009): 33-38.
21. Son SA., et al. "The effect of resin thickness on polymerization characteristics of silorane-based composite resin". *Restorative Dentistry and Endodontics* 39 (2014): 310-318.
22. Braga RR and Ferracane JL. "Contraction stress related to degree of conversion and reaction kinetics". *Journal of Dental Research* 81 (2002): 114-118.
23. Watts DC and Silikas N. "In situ photo-polymerisation and polymerisation-shrinkage phenomena". In: Eliades G, Watts DC, Eliades T, editors. *Dental Hard Tissues and Bonding Interfacial Phenomena and Related Properties*. Berlin, Germany: Springer (2005): 123-154.
24. Sideridou I., et al. "Effect of chemical structure on degree of conversion in light-cured dimethacrylate-based dental resins". *Biomaterials* 23 (2002): 1819-1829.
25. Guimarães GF, et al. "Minimization of polymerization shrinkage effects on composite resins by the control of irradiance during the photoactivation process". *Journal of Applied Oral Science* 26 (2018): e20170528.
26. Wang Z and Chiang MY. "System compliance dictates the effect of composite filler content on polymerization shrinkage stress". *Dental Materials* 32 (2016): 551-560.

27. Gonçalves F, *et al.* "BISGMA/TEGDMA ratio and filler content effects on shrinkage stress". *Dental Materials* 27 (2011): 520-526.
28. Sakaguchi R, *et al.* "Craig's restorative dental materials". 14th edition Elsevier, Inc. (2019): 84-85.
29. Feilzer AJ, *et al.* "Setting stress in composite resin in relation to configuration of the restoration". *Journal of Dental Research* 66 (1987): 1636-1623.
30. Versluis A, *et al.* "Do dental composites always shrink toward the light?". *Journal of Dental Research* 77 (1998): 1435-1445.
31. Braga RR, *et al.* "Influence of cavity dimensions and their derivatives (volume and 'C' factor) on shrinkage stress development and microleakage of composite restorations". *Dental Materials* 22 (2006): 818-823.
32. Giachetti L, *et al.* "A review of polymerization shrinkage stress: Current techniques for posterior direct resin restorations". *The Journal of Contemporary Dental Practice* 7 (2006): 79-88.
33. Sudheer V and Manjunath M. "Contemporary curing profiles: Study of effectiveness of cure and polymerization shrinkage of composite resins: An *In vitro* study". *The Journal of Conservative Dentistry* 14 (2011): 383-386.
34. Pereira R, *et al.* "Physical and photoelastic properties of bulkfill and conventional composites". *Clinical, Cosmetic and Investigational Dentistry* 10 (2018): 287-296.
35. Kidd EA and Beighton D. "Prediction of secondary caries around tooth-colored restorations: A clinical and microbiological study". *Journal Dental Research* 75.12 (1996): 1942-1946.
36. Going RE. "Microleakage around dental restorations: A summarizing review". *JADA* 84.6 (1972): 1349-1357.
37. Brannstrom M and Astrom A. "The hydrodynamics of the dentine; its possible relationship to dentinal pain". *International Dental Journal* 22.2 (1972): 219-227.
38. Dumbryte I. "Enamel cracks evaluation - A method to predict tooth surface damage during the debonding". *Dental Materials Journal* 34 (2015): 828-834.
39. Bicalho AA, *et al.* "Incremental filling technique and composite material-part II: shrinkage and shrinkage stresses". *Operative Dentistry* 39(2014): E83-E92.
40. Ghulman MA. "Effect of cavity configuration (C factor) on the marginal adaptation of low-shrinking composite: a comparative *ex vivo* study". *International Journal of Dentistry* (2011): 159749.
41. Han SH, *et al.* "Internal adaptation of resin composites at two configurations: Influence of polymerization shrinkage and stress". *Dental Materials* 32 (2016): 1085-1094.
42. Frankenberger R, *et al.* "Internal adaptation and overhang formation of direct Class II resin composite restorations". *Clinical Oral Investigations* 3 (1999): 208-215.
43. Prager MC. "Using flowable composites in direct posterior restorations". *Dent Today* 16.7 (1997): 62-69.
44. Lindberg A, *et al.* "Interfacial adaptation of a Class II polyacidmodified resin composite/resin composite laminate restoration *In vivo*". *Acta Odontologica Scandinavica* 58 (2000): 77-84.
45. Van Dijken JW and Pallesen U. "Clinical performance of a hybrid resin composite with and without an intermediate layer of flowable resin composite: A 7-year evaluation". *Dental Materials* 27 (2011): 150-156.
46. Cara RR, *et al.* "Cuspal deflection and microleakage in premolar teeth restored with resin-based composites with and without an intermediary flowable layer" *Journal of Dentistry* 35.6 (2007): 482-489.

47. Karaman E and Ozgunaltay G. "Polymerization Shrinkage of Different Types of Composite Resins and Microleakage With and Without Liner in Class II Cavities". *Operative Dentistry* 39.3 (2014): 325-331.
48. Lutz F, et al. "Quality and durability of marginal adaptation in bonded composite restorations". *Dental Materials* 7.2 (1991): 107-113.
49. Lutz F, et al. "The importance of proximal curing in posterior composite resin restorations". *Quintessence International* 23 (1992): 605-607.
50. Spreafico RC and Gagliani M. "Composite resin restorations on posterior teeth". In: Roulet JF, Degrange M. *Adhesion: The silent revolution in dentistry*. Chicago: Quintessence (2000): 253-276.
51. Klaff D. "Blending incremental and stratified layering techniques to produce an esthetic posterior composite resin restoration with a predictable prognosis". *Journal of Esthetic and Restorative Dentistry* 13.2 (2001): 101-113.
52. Garberoglio R, et al. "Contraction gaps in Class II restorations with self-cured and light-cured resin composites". *American Journal of Dentistry* 8 (1995): 303-307.
53. Verslus A, et al. "Does an incremental filling technique reduce polymerization shrinkage stresses?" *Journal of Dental Research* 75 (1996): 871-878.
54. Rueggeberg FA, et al. "Polymerization depths of contemporary light curing units using microhardness". *International Journal of Esthetic Dentistry* 12 (2000): 340-349.
55. Deliperi S. "An alternative method to reduce polymerization shrinkage in direct posterior composite restoration". *JADA* 133 (2002): 1387-1397.
56. Moosavi H, et al. "Fracture resistance of premolars restored by various types and placement techniques of resin composites". *International Journal of Dentistry* (2012): 5. Article ID 973641, doi:10.1155/2012/973641.
57. Weinmann W, et al. "Siloranes in dental composites". *Dental Materials* 21 (2005): 68-74.
58. Schneider LF, et al. "Influence of photoinitiator type on the rate of polymerization, degree of conversion, hardness and yellowing of dental resin composites". *Dental Materials* 24 (2008): 1169-1177.
59. Bacchi A, et al. "Shrinkage/stress reduction and mechanical properties improvement in restorative composites formulated with thio-urethane oligomers". *The Journal of the Mechanical Behavior of Biomedical Materials* 78 (2018): 235-420.
60. He J, et al. "The effect of adding a new monomer "phene" on the polymerization shrinkage reduction of a dental resin composite". *Dental Materials* 35 (2019): 627-635.
61. Meereis CTW, et al. "Polymerization shrinkage stress of resin-based dental materials: A systematic review and meta-analyses of composition strategies". *Journal of the Mechanical Behavior of Biomedical Materials* 82 (2018): 268-281.
62. Subbiya A, et al. "Comparison of variation in the light curing cycle with a time gap and its effect on polymerization shrinkage, degree of conversion and microhardness of a nanohybrid composite". *Journal of Conservative Dentistry* 18 (2015): 154-158.
63. Ghavami-Lahiji M and Hooshmand T. "Analytical methods for the measurement of polymerization kinetics and stresses of dental resinbased composites: A review". *Journal of Dental Research* 14 (2017): 225-240.
64. Baroudi K and Mahmoud S. "Improving composite resin performance through decreasing its viscosity by different methods". *Open Dentistry Journal* 9 (2015): 235-242.

65. Swift EJ, *et al.* "Class I and II indirect tooth-colored restorations". In: Roberson TM, Heymann HO, Swift EJ Jr, editors. Art and science of operative dentistry. 5th edition. Saint Louis: Mosby (2006): 603-622.
66. McLaren EA, *et al.* "Considerations in the use of polymer and fiber-based indirect restorative materials". *Practical Periodontics and Aesthetic Dentistry* 11 (1999): 423-432.
67. Andreasi Bassi M. "La riduzione dello stress da contrazione delle resine composite mediante mega riempitivi: analisi fotoelastica". *Dentista Moderno* 7 (2005): 83-95.
68. Bicalho AA, *et al.* "Incremental filling technique and composite material-part I: cuspal deformation, bond strength, and physical properties". *Operative Dentistry* 39 (2014): E71-E82.
69. Andreasi Bassi M, *et al.* Polymerization shrinkage and spherical glass mega fillers: effects on cuspal deflection". *Oral Implantology* 9 (2016): 71-79.
70. Sudhapalli SK, *et al.* "A Comparative Evaluation of Microleakage among Newer Composite Materials: An *In vitro* Study". *Contemporary Clinical Dentistry* 9.4 (2018): 587-591.
71. Kamalak H and Kamalak A. "Evaluation of polymerization shrinkage of dental composites by microcomputed tomography". *Biomedical Research* 29.4 (2018): 844-852.
72. Kruly PdC, *et al.* "Meta-analysis of the clinical behavior of posterior direct resin restorations: Low polymerization shrinkage resin in comparison to methacrylate composite resin". *PLoS ONE* 13.2 (2018): e0191942.
73. Lins R, *et al.* "Polymerization Shrinkage Evaluation of Restorative Resin-Based Composites Using Fiber Bragg Grating Sensors". *Polymers* 11.5 (2019): 859.
74. Malarvizhi D, *et al.* "Shrinkage in composites: An enigma". *Journal of International Oral Health* 11 (2019): 244-248.

Volume 19 Issue 5 May 2020

© All rights reserved by Nagy Abdulsamee., *et al.*