

Renal Cell Carcinoma with Lung Metastasis in Association with Scleroderma

Attapon Cheepsattayakorn^{1,2*}, Ruangrong Cheepsattayakorn³ and Porntep Siriwanarangsun¹

¹Faculty of Medicine, Western University, Pathumtani Province, Thailand

²10th Zonal Tuberculosis and Chest Disease Center, Chiang Mai, Thailand

³Department of Pathology, Faculty of Medicine, Chiang Mai University, Chiang Mai, Thailand

*Corresponding Author: Attapon Cheepsattayakorn, 10th Zonal Tuberculosis and Chest Disease Center, Chiang Mai, Thailand.

Received: October 25, 2022; Published: November 04, 2022

Systemic sclerosis (SSc; aka scleroderma), an autoimmune disease with hypothesized etiology of non-infectious, infectious and genetic origins [1]. SSc is rarely associated with renal cell carcinoma (RCC-being diagnosed around 338,000 new cases annually worldwide [2]), whereas it may be associated with most commonly increased risk of lung (most common site (Figure 1-4) [3-5], around 45 - 76% of metastatic RCC [5-7]), breast and skin cancers [1] and metastases (being diagnosed around 20 - 30% of RCC patients at the time of diagnosis of RCC [3-5]) [8], including hematologic malignancies [9]. Clear cell RCC (being accounted for around 85% of renal cancer [10]) (with clear or eosinophilic cytoplasm [11]) originates from the proximal renal tubular cells, the most common subtype (accounting for 70 - 75% of patients at the surgical resection among the three major subtypes of RCC; clear cell, papillary, and chromophobe (Figure 5 and 6) [11-13] genetically involves the 3p chromosome [13], whereas around half of the tumors reveal somatic mutations in the von Hippel-Lindau tumor suppressor (vH-LTS) gene (or inactivation of vH-LTS gene in around 10 - 20% of RCC cases) [13].



Figure 1: Demonstrating a 71-year-old woman with metastatic type 2 papillary renal cell carcinoma (RCC). Surveillance posteroanterior chest radiograph obtained 6 years after nephrectomy shows new nodular opacity (arrow) in right upper lobe.

(Source: Price M, Wu CC, Genshaft S, Sadow PM, Xie L, Shepard J-A O, et al. Imaging and manging of intrathoracic renal cell carcinoma metastases. *AJR* 2018; 210: 1181-1191. DOI: doi.org/10.2214/AJR.18.19645).

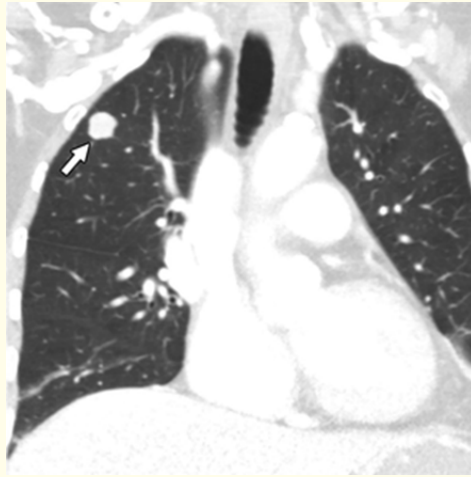


Figure 2: Demonstrating a 71-year-old woman with metastatic type 2 papillary renal cell carcinoma (RCC). Coronal CT image shows corresponding solid 1.5-cm nodule (arrow) in right upper lobe, which was biopsy-proven to represent RCC metastasis. Patient subsequently underwent right upper lobectomy.

(Source: Price M, Wu CC, Genshaft S, Sadow PM, Xie L, Shepard J-A O, et al. Imaging and manging of intrathoracic renal cell carcinoma metastases. *AJR* 2018; 210: 1181-1191. DOI: doi.org/10.2214/AJR.18.19645).



Figure 3: Demonstrating a 71-year-old woman with metastatic type 2 papillary renal cell carcinoma (RCC). Axial CT image obtained approximately 12 months after lobectomy shows that patient developed new enhancing pleural metastases (arrows).

(Source: Price M, Wu CC, Genshaft S, Sadow PM, Xie L, Shepard J-A O, et al. Imaging and manging of intrathoracic renal cell carcinoma metastases. *AJR* 2018; 210: 1181-1191. DOI: doi.org/10.2214/AJR.18.19645).

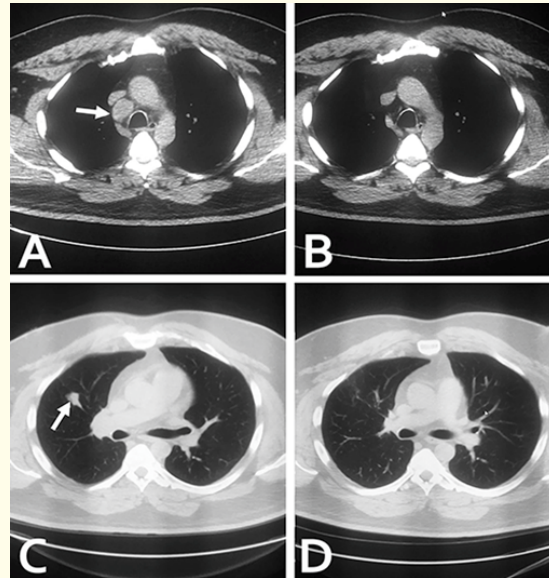


Figure 4: Demonstrating RCC with lung metastasis with a subcarinal lymph node demonstrated by coronal chest CT prior the endobronchial ultrasound fine needle aspiration (EBUS FNA) (A) (arrow), resolution of the subcarinal lymph node 3 weeks following the EBUS FNA (B), pulmonary nodule in the upper right lung prior to the EBUS FNA of the subcarinal lymph node (C) (arrow), and resolution of the pulmonary nodule 3 weeks following the EBUS FNA (D).

(Source: Shields LBE, Kalebastay AR. Spontaneous regression of delayed pulmonary and mediastinal metastases from clear cell renal cell carcinoma. *Case Rep in Oncol* 2020; 13: 1285-1294).

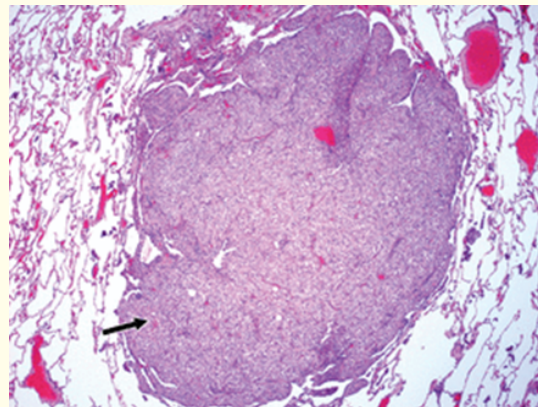


Figure 5: Demonstrating a 71-year-old woman with metastatic type 2 papillary renal cell carcinoma (RCC). Photomicrograph from lobectomy specimen (H and E, low power) shows that tumor nodule (arrow) is well demarcated from surrounding lung parenchyma. (Source: Price M, Wu CC, Genshaft S, Sadow PM, Xie L, Shepard J-A O, et al. Imaging and manging of intrathoracic renal cell carcinoma metastases. *AJR* 2018; 210: 1181-1191. DOI: doi.org/10.2214/AJR.18.19645).

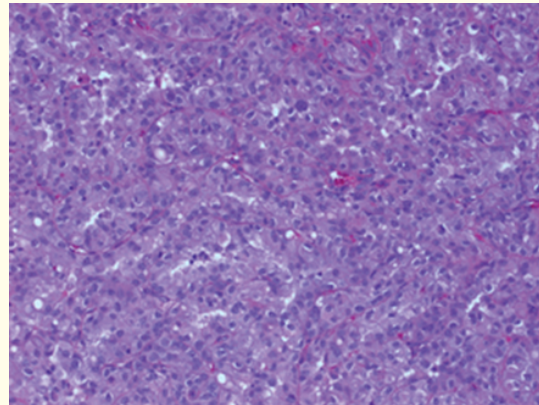


Figure 6: Demonstrating a 71-year-old woman with metastatic type 2 papillary renal cell carcinoma (RCC). Photomicrograph (H and E, high power) shows that tumor cells have large irregular nuclei and abundant eosinophilic cytoplasm admixed with tubular and papillary architecture.

(Source: Price M, Wu CC, Genshaft S, Sadow PM, Xie L, Shepard J-A O, et al. Imaging and manging of intrathoracic renal cell carcinoma metastases. *AJR* 2018; 210: 1181-1191. DOI: doi.org/10.2214/AJR.18.19645).

Clinically, RCC patients with pulmonary metastasis who have endobronchial involvement may present with hemoptysis, lung atelectasis, and post-obstructive pneumonia [14,15]. For patient following-up, the National Comprehensive Cancer Network suggest a baseline chest-computed tomography (CT) (Figure 2-4) within 3 - 6 months of the radical nephrectomy and following-up the chest radiography or chest CT every 3 - 6 months for at least 3 years and should be followed by up-to-5-years of annual surveillance imaging [16]. Interferon-alpha is the principal pharmacotherapeutic option with response rate of 12% and high toxicity [4], whereas therapy with high-dose interleukin-2 gets complete response in around 5% of advanced-RCC patients [17] with severe cardiovascular toxicity limitation [18]. Local therapy for RCC includes surgical metastasectomy [19,20], percutaneous CT-guided thermal ablation [21] and radiation [22,23].

In conclusion, it is unlikely that scleroderma-related fibrosis or immunosuppressant exposures that made by the short scleroderma-RCC diagnosis interval would explain the increased malignancy risk. A significantly increased possibility of pulmonary-metastasis progression in radical- or partial-nephrectomy-RCC patients with pulmonary nodules should be aware.

Bibliography

1. Patel HS, et al. "Scleroderma associated with renal cell carcinoma: a case report and literature review". *Journal of Scleroderma and Related Disorders* 6.3 (2021): 316-319.
2. Ferlay J., et al. "Cancer incidence and mortality worldwide: sources, methods and major patterns in GLOBOCAN 2012". *International Journal of Cancer* 136 (2015): E359-E386.
3. Motzer RJ., et al. "Renal cell carcinoma". *The New England Journal of Medicine* 335 (1996): 865-875.
4. Weiss L., et al. "Metastatic patterns of renal carcinoma: an analysis of 687 necropsies". *Journal of Cancer Research and Clinical Oncology* 114 (1988): 605-612.
5. Bianchi M., et al. "Distribution of metastatic sites in renal cell carcinoma: a population-based analysis". *Annals of Oncology* 23 (2012): 973-980.

6. Bukowski RM. "Natural history and therapy of metastatic renal cell carcinoma: the role of interleukin-2". *Cancer* 80 (1997): 1198-1220.
7. Saitoh H. "Distant metastasis of renal adenocarcinoma". *Cancer* 48 (1981): 1487-1491.
8. Crosnier C., et al. "Scleroderma renal crisis and cancer". *QJM: An International Journal of Medicine* 111.4 (2018): 261-262.
9. Zeineddine N., et al. "Systemic sclerosis and malignancy: a review of current data". *Journal of Clinical Medicine Research* 8.9 (2016): 625-632.
10. Cohen HT and McGovern FJ. "Renal cell carcinoma". *The New England Journal of Medicine* 353 (2005): 2477-2490.
11. Kovacs G., et al. "The Heidelberg classification of renal cell tumors". *The Journal of Pathology* 183 (1997): 131-133.
12. Beck SD., et al. "Effect of papillary and chromophobe cell type on disease-free survival after nephrectomy for renal cell carcinoma". *Annals of Surgical Oncology* 11 (2004): 71-77.
13. Störkel S., et al. "Classification of renal cell carcinoma: Workgroup No. 1. Union Internationale Contre le Cancer (UICC) and the American Joint Committee on Cancer (AJCC)". *Cancer* 80 (1997): 987-989.
14. Braman SS and Whitcomb ME. "Endobronchial metastasis". *Archives of Internal Medicine* 135 (1975): 543-547.
15. Noy S., et al. "Endobronchial metastasis of renal cell carcinoma". *Journal of Surgical Oncology* 31 (1986): 268-270.
16. Motzer RJ., et al. "Kidney cancer, version 3.2015". *National Comprehensive Cancer Network* 13 (2015): 151-159.
17. Klapper JA., et al. "High-dose interleukin-2 for the treatment of metastatic renal cell carcinoma: a retrospective analysis of response and survival in patients treated in the surgery branch at the National Cancer Institute between 1986 and 2006". *Cancer* 113 (2008): 293-301.
18. Allard CB., et al. "Contemporary trends in high-dose interleukin-2 use for metastatic renal cell carcinoma in the United States". *Urologic Oncology* 33 (2015): 496.e11-496.e16.
19. Cerfolio RJ., et al. "Pulmonary resection of metastatic renal cell carcinoma". *The Annals of Thoracic Surgery* 57 (1994): 339-344.
20. Hofmann HS., et al. "Prognostic factors and survival after pulmonary resection of metastatic renal cell carcinoma". *European Urology* 48 (2005): 77-81.
21. De Bae're T., et al. "Radiofrequency ablation is a valid treatment option for lung metastases: experience in 566 patients with 1,037 metastases". *Annals of Oncology* 26 (2015): 987-991.
22. Altoos B., et al. "Local control rates of metastatic renal cell carcinoma (RCC) to thoracic, abdominal, and soft tissue lesions using stereotactic body radiotherapy (SBRT)". *Radiation Oncology* 10 (2015): 218.
23. Wersall PJ., et al. "Extracranial stereotactic radiotherapy for primary and metastatic renal cell carcinoma". *Radiotherapy and Oncology* 77 (2005): 88-95.

Volume 5 Issue 12 December 2022

© All rights reserved by Attapon Cheepsattayakorn., et al.